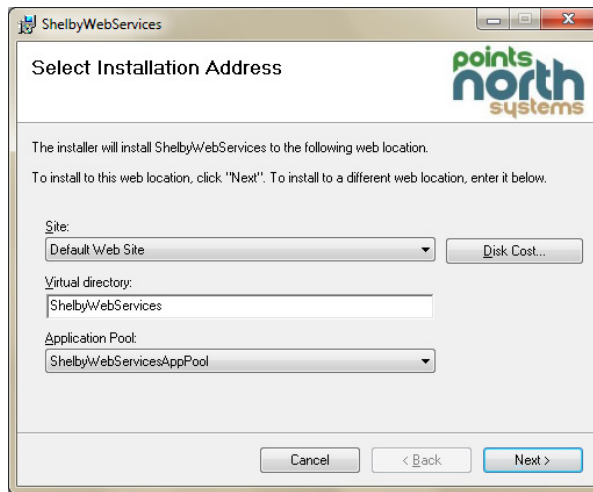


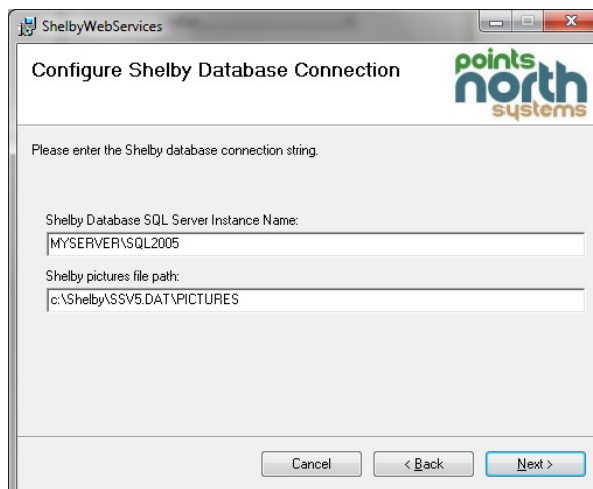


## Points North Systems, Inc. ShelbyWebServices Installation Guide

1. Install IIS 6.0 or better and ASP.NET on your selected web server.
2. Install .NET 4.0 Framework.
3. Create **ShelbyWebServicesAppPool** app pool in IIS; Set to .Net v4.0 version. Ensure that the security entity the new app pool runs under has sufficient network privileges to access the Shelby pictures share (see step 5 below).
4. Determine Shelby Database Instance Name: \_\_\_\_\_
5. Run ShelbyWebServicesSetup.msi.
  - Make sure you select the **ShelbyWebServicesAppPool** for Application Pool.



- Enter the Shelby Database SQL Server instance name.
- Enter the path to the pictures within the Shelby file system.



- Enter the SMTP email server's name for sending mail.
- Enter the SMTP email server's port number.
- Enter the account username and password for sending mail.

ShelbyWebServices

### Email Server Settings

points north systems

Please enter the email server information.

Email Server Hostname:

Email Server Port:

Email Account Username:

Email Account Password:

Cancel < Back Next >

- Click Next to Finish.

ShelbyWebServices

### Installation Complete

points north systems

ShelbyWebServices has been successfully installed.  
Click "Close" to exit.

Please use Windows Update to check for any critical updates to the .NET Framework.

Cancel < Back Close

6. Prepare ShelbyDB database with custom objects.
  - It is possible that the client is using MSDE which does not come with SQL Management Tools. Therefore you will need to use OSQL at the command prompt. If so, then backup the ShelbyDB by using the following: `BACKUP DATABASE ShelbyDB TO DISK = 'c:\temp\ShelbyDB-yyyymmdd.bak'`
  - Open Microsoft SQL Server Management Studio, connect to ShelbyDB.
  - Run the ***PNSCreateShelbyWebServicesTables.sql*** script in a new query window. This script can be found in the ShelbyWebServices install folder.
  - Note: SQL 2000 doesn't support CREATE LOGIN/USER, so you must use `sp_addlogin` and `sp_adduser`, and `sp_defaultdb`. These stored procedures should be run from under the Shelby database (use ShelbyDB).
  
7. Replace images/ChurchLogo.jpg with your organization logo. The logo should be about 145x85.
  
8. Browse to <http://localhost/ShelbyWebServices/logon.aspx> on server.
  - Test logging in as admin, admin.
  - Test logging in as admin, admin from remote client.
  
9. You must configure the web server and ShelbyWebServices application to require SSL security. This is important in order to ensure secure and encrypted communications between ShelbyWebServices and all Shelby Mobile devices.
  
10. IIS6 Configuring SSL on the ShelbyWebServices
  - Click properties on the target Web Server
  - Click on the Directory Security Tab
  - Click the View button to view the installed certificate. If the View button is disabled then no certificate is installed.
  - Run the SelfSSL executable from the Dos prompt. This executable will install a self signed certificate to the specified web server. HTTPS will not function on IIS6 without an installed certificate. SelfSSL is available in the IIS6 Resources Kit at <http://www.pointsnorthsys.com/downloads/iis60rkt.exe>. Example `>selfssl /V:3650` will create and attach a certificate valid for 10 years.
  
11. IIS6 Setting ShelbyWebServices to be require SSL
  - Click properties on ShelbyWebServices
  - Click on Directory Security tab, then Edit button.
  - Click on Require SSL Encryption, Click 128 bit encryption.

## Troubleshooting Tips

### 12.IIS6 Specific Configuration for ShelbyWebServices

- Make sure ASP.Net v4.0 is enabled
  - Click on Web Server Extensions
  - Make sure .Net v4.0 is Enabled.

13.As part of Shelby Mobile purchase, technical support and installation help is available at [info@pointsnorthsys.com](mailto:info@pointsnorthsys.com) or by calling 412-318-0456.